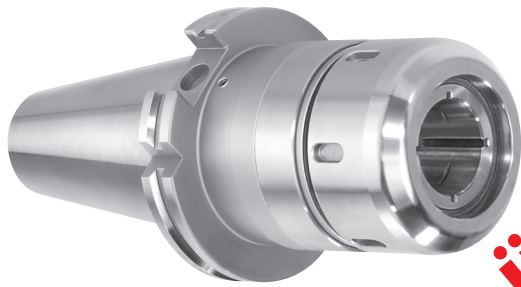
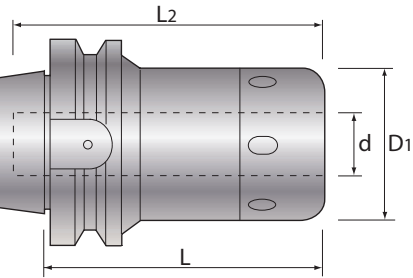


XXL

CTS Hochleistungs-Kraftspannfutter überlang CTS High Performance Milling Chuck extra long



**überlang
extra long**



SK50|BT50

DIN 69871 | ISO 7388-1 | JIS B6339

3.0
32.0

0.005
3x D

max
15.000
min⁻¹

Form
AD



Innere Kühlmittelzufuhr
Inner coolant supply
Korrosionsschutz
Rust proofment

Halter Holder		d	D1	L	L2				
SK50 BT50	-CT20S	-200	20	52	200	80	MC20-d	HS-2-20	RS-20
		-250	20	52	250	80	MC20-d	HS-2-20	RS-20
		-300	20	52	300	80	MC20-d	HS-2-20	RS-20
	-CT25S	-200	25	61	200	80	MC25-d	HS-2.5-25	RS-25
		-250	25	61	250	80	MC25-d	HS-2.5-25	RS-25
		-300	25	61	300	80	MC25-d	HS-2.5-25	RS-25
	-CT32S	-200	32	73	200	120	MC32-d	HS-3-32	RS-32
		-250	32	73	250	120	MC32-d	HS-3-32	RS-32
		-300	32	73	300	120	MC32-d	HS-3-32	RS-32

MC

Spannhülsen für Kraftspannfutter CTS
Straight Collets for Milling Chuck CTS

MC-OH
Innenkühlung
Inner Coolant

MC-C
Peripheriekühlung
Side-Through Coolant

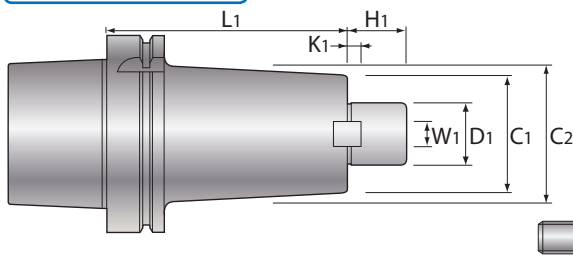
D	MC20	MC20-OH	MC20-C	MC25	MC25-OH	MC25-C	MC32	MC32-OH	MC-32-C
	für for CT20S			für for CT25S			für for CT32S		
3	✓								
4	✓	✓					✓	✓	
5	✓	✓							
6	✓	✓	✓	✓	✓	✓	✓	✓	✓
7	✓	✓							
8	✓	✓	✓	✓	✓	✓	✓	✓	✓
9	✓	✓							
10	✓	✓	✓	✓	✓	✓	✓	✓	✓
11	✓	✓							
12	✓	✓	✓	✓	✓	✓	✓	✓	✓
13	✓	✓							
14	✓	✓	✓				✓	✓	✓
15	✓	✓							
16	✓	✓	✓	✓	✓	✓	✓	✓	✓
17	✓	✓							
18	✓	✓					✓	✓	✓
20				✓	✓	✓	✓	✓	✓
25							✓	✓	✓

XXL

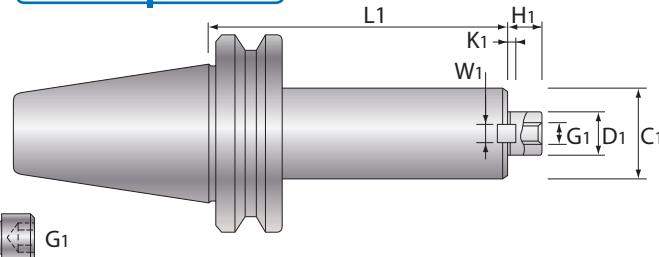
FMC Aufsteck-Fräsdorn **extra lang**

FMC Face Mill Arbors **extra long**

HSK100A



SK50|BT50



HSK100A

DIN 69893 | ISO 12164

Halter Holder		D1 (h6)	L1	C1	C2	H1	W1	K1	G1	Messerkopf Cutter Ø	
HSK100A	-FMC22	-185	22	185	45	85	20	10.5	5	M10	50 63
		-285	22	285	45	85	20	10.5	5	M10	50 63
		-388	22	388	45	85	20	10.5	5	M10	50 63
	-FMC27	-185	27	185	70	85	21	12.5	6	M12	80
		-285	27	285	70	85	21	12.5	6	M12	80
		-385	27	385	70	85	21	12.5	6	M12	80

SK50|BT50

DIN 69871 | ISO 7388-1 | JIS B6339

Halter Holder		D1 (h6)	L1	C1	H1	W1	K1	G1	Messerkopf Cutter Ø	
SK50 BT50	-FMC22	-188	22	188	49	20	10	5.6	M10	50 63
		-288	22	288	49	20	10	5.6	M10	50 63
		-388	22	388	49	20	10	5.6	M10	50 63
	-FMC27	-185	27	185	60	21	12	6.3	M12	80
		-285	27	285	60	21	12	6.3	M12	80
		-385	27	385	60	21	12	6.3	M12	80

HSK-Kühlmittelrohr im Lieferumfang enthalten. HSK-Coolant pipe included in delivery.
 HSK ohne Bohrung für Handspannung. HSK without holes for manual clamping.

SSK50|BBT50

DIN 69871 | ISO 7388-1 | JIS B6339

Halter Holder		D1 (h6)	L1	C1	H1	W1	K1	G1	Messerkopf Cutter Ø	
SSK-AH050 BBT-AH050	-FMC22	-200	22	200	45	18	10	5	M10	50 63
		-250	22	250	45	18	10	5	M10	50 63
		-300	22	300	45	18	10	5	M10	50 63
	-FMC27	-200	27	200	70	20	12	6	M12	80
		-250	27	250	70	20	12	6	M12	80
		-300	27	300	70	20	12	6	M12	80

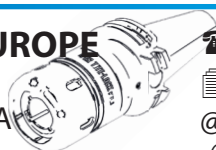
mit Plananlage und Hohlsteilkegel
 with 2Face-Contact and Hollow shank

MEMBER OF
MACHINING
 INNOVATIONS NETWORK



NT TOOL EUROPE

Siemensstrasse 17 A
 61449 Steinbach, Germany



+49-(0)6171-91639 - 0

+49-(0)6171-91639-90

@ info@nttooleurope.com

www.nttooleurope.com

